



Polypropylene Pipe Fittings

Features:

- Glass reinforced polypropylene.
- Heavy duty (Schedule 80).
- Lightweight with excellent strength.
- NPT threads.
- Excellent chemical resistance.
- Pressure to 150 P. S.I. at 70°F.



PART NO	DESCRIPTION
POLY NIPPLES	
NIP025-SH	1/4" Short Poly Nipple
NIP038-SH	3/8" Short Poly Nipple
NIP050-SH	1/2" Short Poly Nipple
NIP050-3	1/2" x 3" Poly Nipple
NIP075-SH	3/4" Short Poly Nipple
NIP075-4	3/4" x 4" Poly Nipple
NIP075-6	3/4" x 6" Poly Nipple
NIP100-SH	1" Short Poly Nipple
NIP100-4	1" x 4" Poly Nipple
NIP100-6	1" x 6" Poly Nipple
NIP125-SH	1-1/4" Short Poly Nipple
NIP125-4	1-1/4" x 4" Poly Nipple
NIP125-6	1-1/4" x 6" Poly Nipple
NIP150-SH	1-1/2" Short Poly Nipple
NIP150-3	1-1/2" x 3" Poly Nipple
NIP150-4	1-1/2" x 4" Poly Nipple
NIP150-5	1-1/2" x 5" Poly Nipple
NIP150-6	1-1/2" x 6" Poly Nipple
NIP200-SH	2" Short Poly Nipple
NIP200-4	2" x 4" Poly Nipple
NIP200-6	2" x 6" Poly Nipple
NIP300-SH	3" Short Poly Nipple
NIP300-4	3" x 4" Poly Nipple
NIP300-6	3" x 6" Poly Nipple
NIP400-SH	4" Short Poly Nipple



PART NO	DESCRIPTION
POLY REDUCING NIPPLES	
RN050-038	1/2" x 3/8" Poly Reducing Nipple
RN075-050	3/4" x 1/2" Poly Reducing Nipple
RN100-050	1" x 1/2" Poly Reducing Nipple
RN100-075	1" x 3/4" Poly Reducing Nipple
RN125-075	1-1/4" x 3/4" Poly Reducing Nipple
RN125-100	1-1/4" x 1" Poly Reducing Nipple
RN150-100	1-1/2" x 1" Poly Reducing Nipple
RN150-125	1-1/2" x 1-1/4" Poly Reducing Nipple
RN200-125	2" x 1-1/4" Poly Reducing Nipple
RN200-150	2" x 1-1/2" Poly Reducing Nipple
RN300-200	3" x 2" Poly Reducing Nipple



PART NO	DESCRIPTION
POLY PIPE COUPLINGS	
CPLG025	1/4" Poly Pipe Coupling
CPLG038	3/8" Poly Pipe Coupling
CPLG050	1/2" Poly Pipe Coupling
CPLG075	3/4" Poly Pipe Coupling
CPLG100	1" Poly Pipe Coupling
CPLG125	1-1/4" Poly Pipe Coupling
CPLG150	1-1/2" Poly Pipe Coupling
CPLG200	2" Poly Pipe Coupling
CPLG300	3" Poly Pipe Coupling



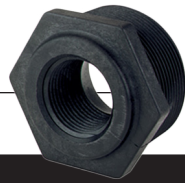
PART NO	DESCRIPTION
POLY REDUCING COUPLINGS	
RC100-075	1" x 3/4" Poly Reducing Coupling
RC150-100	1-1/2" x 1" Poly Reducing Coupling
RC150-125	1-1/2" x 1-1/4" Poly Reducing Coupling
RC200-050	2" x 1/2" Poly Reducing Coupling
RC200-100	2" x 1" Poly Reducing Coupling
RC200-125	2" x 1-1/4" Poly Reducing Coupling
RC200-150	2" x 1-1/2" Poly Reducing Coupling
RC300-200	3" x 2" Poly Reducing Coupling

PIPE FITTINGS

Polypropylene Pipe Fittings



PIPE FITTINGS



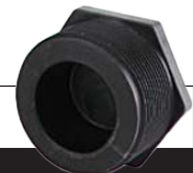
PART NO	DESCRIPTION
POLY REDUCING BUSHING	
RB038-025	3/8" MPT x 1/4" FPT Reducing Bushing
RB050-018	1/2" MPT x 3/8" FPT Reducing Bushing
RB050-025	1/2" MPT x 1/4" FPT Reducing Bushing
RB050-038	1/2" MPT x 3/8" FPT Reducing Bushing
RB075-018	3/4" MPT x 1/8" FPT Reducing Bushing
RB075-025	3/4" MPT x 1/4" FPT Reducing Bushing
RB075-038	3/4" MPT x 3/8" FPT Reducing Bushing
RB075-050	3/4" MPT x 1/2" FPT Reducing Bushing
RB100-018	1" MPT x 1/8" FPT Reducing Bushing
RB100-025	1" MPT x 1/4" FPT Reducing Bushing
RB100-050	1" MPT x 1/2" FPT Reducing Bushing
RB100-075	1" MPT x 3/4" FPT Reducing Bushing
RB125-038	1-1/4" MPT x 3/8" FPT Reducing Bushing
RB125-075	1-1/4" MPT x 3/4" FPT Reducing Bushing
RB125-100	1-1/4" MPT x 1" FPT Reducing Bushing
RB150-075	1-1/2" MPT x 3/4" FPT Reducing Bushing
RB150-100	1-1/2" MPT x 1" FPT Reducing Bushing
RB150-125	1-1/2" MPT x 1-1/4" FPT Reducing Bushing
RB200-075	2" MPT x 3/4" FPT Reducing Bushing
RB200-100	2" MPT x 1" FPT Reducing Bushing
RB200-125	2" MPT x 1-1/4" FPT Reducing Bushing
RB200-150	2" MPT x 1-1/2" FPT Reducing Bushing
RB300-150	3" MPT x 1-1/2" FPT Reducing Bushing
RB300-200	3" MPT x 2" FPT Reducing Bushing
RB400-300	4" MPT x 3" FPT Reducing Bushing



PART NO	DESCRIPTION
POLY HOSE BARB CROSSES	
HBC050075	1/2" x 3/4" Hose Barb Cross



PART NO	DESCRIPTION
POLY PIPE CAPS	
CAP038	3/8" Poly Pipe Cap
CAP050	1/2" Poly Pipe Cap
CAP075	3/4" Poly Pipe Cap
CAP100	1" Poly Pipe Cap
CAP125	1-1/4" Poly Pipe Cap
CAP150	1-1/2" Poly Pipe Cap
CAP200	2" Poly Pipe Cap
CAP300	3" Poly Pipe Cap



PART NO	DESCRIPTION
POLY PIPE PLUGS	
PLUG025	1/4" Poly Pipe Plug
PLUG038	3/8" Poly Pipe Plug
PLUG050	1/2" Poly Pipe Plug
PLUG075	3/4" Poly Pipe Plug
PLUG100	1" Poly Pipe Plug
PLUG125	1-1/4" Poly Pipe Plug
PLUG150	1-1/2" Poly Pipe Plug
PLUG200	2" Poly Pipe Plug
PLUG300	3" Poly Pipe Plug



PART NO	DESCRIPTION
POLY CROSSES	
CR038	3/8" Poly Cross
CR050	1/2" Poly Cross
CR075	3/4" Poly Cross
CR100	1" Poly Cross
CR125	1-1/4" Poly Cross
CR150	1-1/2" Poly Cross
CR200	2" Poly Cross

Polypropylene Pipe Fittings

Features:

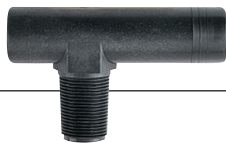
- Glass reinforced polypropylene.
- Heavy duty (Schedule 80).
- Lightweight with excellent strength.
- NPT threads.
- Excellent chemical resistance.
- Pressure to 150 P. S.I. at 70°F.



PART NO	DESCRIPTION
POLY TEES	
TEE025	1/4" Poly Tee
TEE038	3/8" Poly Tee
TEE050	1/2" Poly Tee
TEE075	3/4" Poly Tee
TEE100	1" Poly Tee
TEE125	1-1/4" Poly Tee
TEE150	1-1/2" Poly Tee
TEE200	2" Poly Tee
TEE300	3" Poly Tee



PART NO	DESCRIPTION
90° POLY STREET ELBOWS	
SL025-90	1/4" 90° Poly Street Elbow
SL038-90	3/8" 90° Poly Street Elbow
SL050-90	1/2" 90° Poly Street Elbow
SL075-90	3/4" 90° Poly Street Elbow
SL100-90	1" 90° Poly Street Elbow
SL125-90	1-1/4" 90° Poly Street Elbow
SL150-90	1-1/2" 90° Poly Street Elbow
SL200-90	2" 90° Poly Street Elbow
SL300-90	3" 90° Poly Street Elbow



PART NO	DESCRIPTION
90° POLY ELBOW	
HBEL150/100-90	1-1/2" x 1" 90° Poly Hose Barb Elbow



PART NO	DESCRIPTION
POLY GAUGE TEE (GAUGE NOT INCLUDED)	
TEG075	3/4" Poly Tee with 1/4" Female Thread
TEG100	1" Poly Tee with 1/4" Female Thread



PART NO	DESCRIPTION
90° POLY HOSE BARB ELBOW	
HBEL100-90	1" 90° Poly Hose Barb Elbow



PART NO	DESCRIPTION
90° POLY HOSE BARB ELBOW	
HBB20012590	2" x 1-1/4" 90° Poly Hose Barb Elbow



PART NO	DESCRIPTION
90° POLY ELBOWS	
EL025-90	1/4" 90° Poly Elbow
EL038-90	3/8" 90° Poly Elbow
EL050-90	1/2" 90° Poly Elbow
EL075-90	3/4" 90° Poly Elbow
EL100-90	1" 90° Poly Elbow
EL125-90	1-1/4" 90° Poly Elbow
EL150-90	1-1/2" 90° Poly Elbow
EL200-90	2" 90° Poly Elbow
EL300-90	3" 90° Poly Elbow



PART NO	DESCRIPTION
45° POLY ELBOW	
EL100-45	1" 45° Poly Street Elbow

PIPE FITTINGS

Polypropylene Pipe Fittings



PART NO	DESCRIPTION
45° POLY STREET ELBOWS	
SL075-45	3/4" 45° Poly Street Elbow
SL100-45	1" 45° Poly Street Elbow
SL125-45	1-1/4" 45° Poly Street Elbow
SL150-45	1-1/2" 45° Poly Street Elbow
SL200-45	2" 45° Poly Street Elbow
SL300-45	3" 45° Poly Street Elbow



PART NO	DESCRIPTION
POLY 90° HOSE BARBS	
HB025-90	1/4" Male Thread x 1/4" 90° Hose Barb
HB025/038-90	1/4" Male Thread x 3/8" 90° Hose Barb
HB025/050-90	1/4" Male Thread x 1/2" 90° Hose Barb
HB038-90	3/8" Male Thread x 3/8" 90° Hose Barb
HB050/038-90	1/2" Male Thread x 3/8" 90° Hose Barb
HB050-90	1/2" Male Thread x 1/2" 90° Hose Barb
HB050/075-90	1/2" Male Thread x 3/4" 90° Hose Barb
HB075/050-90	3/4" Male Thread x 1/2" 90° Hose Barb
HB075-90	3/4" Male Thread x 3/4" 90° Hose Barb
HB075/100-90	3/4" Male Thread x 1" 90° Hose Barb
HB100/075-90	1" Male Thread x 3/4" 90° Hose Barb
HB100-90	1" Male Thread x 1" 90° Hose Barb
HB100/125-90	1" Male Thread x 1-1/4" 90° Hose Barb
HB125/100-90	1-1/4" Male Thread x 1" 90° Hose Barb
HB125-90	1-1/4" Male Thread x 1-1/4" 90° HB
HB125/150-90	1-1/4" Male Thread x 1-1/2" 90° HB
HB150/125-90	1-1/2" Male Thread x 1-1/4" 90° HB
HB150-90	1-1/2" Male Thread x 1-1/2" 90° HB
HB200/150-90	2" Male Thread x 1-1/2" 90° Hose Barb
HB200-90	2" Male Thread x 2" 90° Hose Barb
HB300-90	3" Male Thread x 3" 90° Hose Barb



PART NO	DESCRIPTION
POLY STRAIGHT HOSE BARBS	
HB025	1/4" Male Thread x 1/4" Hose Barb
HB025-038	1/4" Male Thread x 3/8" Hose Barb
HB025-050	1/4" Male Thread x 1/2" Hose Barb
HB038	3/8" Male Thread x 3/8" Hose Barb
HB038-025	3/8" Male Thread x 1/4" Hose Barb
HB038-050	3/8" Male Thread x 1/2" Hose Barb
HB050-025	1/2" Male Thread x 1/4" Hose Barb
HB050-038	1/2" Male Thread x 3/8" Hose Barb
HB050	1/2" Male Thread x 1/2" Hose Barb
HB050-075	1/2" Male Thread x 3/4" Hose Barb
HB075-038	3/4" Male Thread x 3/8" Hose Barb
HB075-050	3/4" Male Thread x 1/2" Hose Barb
HB075-058	3/4" Male Thread x 5/8" Hose Barb
HB075	3/4" Male Thread x 3/4" Hose Barb
HB075-100	3/4" Male Thread x 1" Hose Barb
HB100-075	1" Male Thread x 3/4" Hose Barb
HB100	1" Male Thread x 1" Hose Barb
HB100-125	1" Male Thread x 1-1/4" Hose Barb
HB125-075	1-1/4" Male Thread x 3/4" Hose Barb
HB125-100	1-1/4" Male Thread x 1" Hose Barb
HB125	1-1/4" Male Thread x 1-1/4" Hose Barb
HB125-150	1-1/4" Male Thread x 1-1/2" Hose Barb
HB150-100	1-1/2" Male Thread x 1" Hose Barb
HB150-125	1-1/2" Male Thread x 1-1/4" Hose Barb
HB150	1-1/2" Male Thread x 1-1/2" Hose Barb
HB150-200	1-1/2" Male Thread x 2" Hose Barb
HB200-150	2" Male Thread x 1-1/2" Hose Barb
HB200	2" Male Thread x 2" Hose Barb
HB300	3" Male Thread x 3" Hose Barb
HB400	4" Male Thread x 4" Hose Barb

PIPE FITTINGS

Polypropylene Pipe Fittings



PART NO	DESCRIPTION
POLY HOSE BARB TEES	
HBT025	1/4" Hose Barb Tee
HBT038	3/8" Hose Barb Tee
HBT050-038	1/2" x 1/2" x 3/8" Hose Barb Tee
HBT050	1/2" Hose Barb Tee
HBT050-075	1/2" x 1/2" x 3/4" Hose Barb Tee
HBT075-050	3/4" x 3/4" x 1/2" Hose Barb Tee
HBT075	3/4" Hose Barb Tee
HBT075-100	3/4" x 3/4" x 1" Hose Barb Tee
HBT100-075	1" x 1" x 3/4" Hose Barb Tee
HBT100	1" Hose Barb Tee
HBT200	2" Hose Barb Tee
HBT300	3" Hose Barb Tee



PART NO	DESCRIPTION
POLY HOSE BARB THREADED TEES	
HBT100-100	1" Hose Barb x 1" Hose Barb x 1" Male Thread Hose Barb Tee
HBT150-100	1-1/2" Hose Barb x 1-1/2" Hose Barb x 1" Male Thread Hose Barb Tee
HBT150-150	1-1/2" Hose Barb x 1-1/2" Hose Barb x 1-1/2" Male Thread Hose Barb Tee



PART NO	DESCRIPTION
POLY SWIVEL	
SW100	1" Male x 1" Female Swivel
SW150	1-1/2" Male x 1-1/2" Female Swivel
SW200	2" Male x 2" Female Swivel
SW220	2" Full Port Male x 2" Full Port Female Swivel



PART NO	DESCRIPTION
POLY FEMALE HOSE BARBS	
HBF075	3/4" Female Thread
HBF075-100	3/4" Female Thread x 1" Hose Shank
HBF100	1" Female Thread x 1" Hose Shank



PART NO	DESCRIPTION
POLY HOSE MENDERS	
HM025	1/4" x 1/4" Hose Barb
HM038	3/8" x 3/8" Hose Barb
HM050	1/2" x 1/2" Hose Barb
HM075	3/4" x 3/4" Hose Barb
HM100	1" x 1" Hose Barb
HM125	1-1/4" x 1-1/4" Hose Barb
HM150	1-1/2" x 1-1/2" Hose Barb
HM200	2" x 2" Hose Barb
HM300	3" x 3" Hose Barb



PART NO	DESCRIPTION
8 STATION POLY MANIFOLD	
TM075/050	18 Station Manifold 3/4" Inlet x 1/2" Outlet, 1/4" Gauge Port

Teflon Tape

An effective, reliable sealant used on MPT fittings to help prevent leaks. This easy-to-use economical sealant keeps water, gas and air from leaking through threaded connections in plumbing pipes.

How to Order:

Teflon Tape.....1"
Teflon Tape.....1/2"



Polypropylene Pipe Fittings

HYPRO®

PIPE FITTINGS



PART NO	DESCRIPTION
POLY MALE PIPE THREAD BY HOSE BARB	
3A1814	1/8" Male Thread x 1/4" Hose Barb
3A1838	1/8" Male Thread x 3/8" Hose Barb
3A14	1/4" Male Thread x 1/4" Hose Barb
3A1438	1/4" Male Thread x 3/8" Hose Barb
3A1412	1/4" Male Thread x 1/2" Hose Barb
3A3814	3/8" Male Thread x 1/4" Hose Barb
3A38	3/8" Male Thread x 3/8" Hose Barb
3A3812	3/8" Male Thread x 1/2" Hose Barb
3A1214	1/2" Male Thread x 1/4" Hose Barb
3A1238	1/2" Male Thread x 3/8" Hose Barb
3A12	1/2" Male Thread x 1/2" Hose Barb
3A1258	1/2" Male Thread x 5/8" Hose Barb
3A1234	1/2" Male Thread x 3/4" Hose Barb
3A3438	3/4" Male Thread x 3/8" Hose Barb
3A3412	3/4" Male Thread x 1/2" Hose Barb
3A34	3/4" Male Thread x 3/4" Hose Barb
3A34100	3/4" Male Thread x 1" Hose Barb
3A10034	1" Male Thread x 3/4" Hose Barb
3A100	1" Male Thread x 1" Hose Barb



PART NO	DESCRIPTION
POLY FEMALE PIPE THREAD BY HOSE BARB	
3AF14	1/4" Female Thread x 1/4" Hose Barb
3AF1438	1/4" Female Thread x 3/8" Hose Barb
3AF3814	3/8" Female Thread x 1/4" Hose Barb
3AF38	3/8" Female Thread x 3/8" Hose Barb
3AF3812	3/8" Female Thread x 1/2" Hose Barb
3AF1214	1/2" Female Thread x 1/4" Hose Barb
3AF1238	1/2" Female Thread x 3/8" Hose Barb
3AF12	1/2" Female Thread x 1/2" Hose Barb
3AF1258	1/2" Female Thread x 5/8" Hose Barb
3AF1234	1/2" Female Thread x 3/4" Hose Barb
3AF3438	3/4" Female Thread x 3/8" Hose Barb
3AF3412	3/4" Female Thread x 1/2" Hose Barb
3AF3458	3/4" Female Thread x 5/8" Hose Barb
3AF34	3/4" Female Thread x 3/4" Hose Barb



PART NO	DESCRIPTION
ELBOWS MALE PIPE THREAD 90° HOSE BARB	
3EL14	1/4" Male Thread x 1/4" 90° Hose Barb
3EL1438	1/4" Male Thread x 3/8" 90° Hose Barb
3EL1412	1/4" Male Thread x 1/2" 90° Hose Barb
3EL3814	3/8" Male Thread x 1/4" 90° Hose Barb
3EL38	3/8" Male Thread x 3/8" 90° Hose Barb
3EL3812	3/8" Male Thread x 1/2" 90° Hose Barb
3EL3858	3/8" Male Thread x 5/8" 90° Hose Barb
3EL1214	1/2" Male Thread x 1/4" 90° Hose Barb
3EL1238	1/2" Male Thread x 3/8" 90° Hose Barb
3EL12	1/2" Male Thread x 1/2" 90° Hose Barb
3EL1258	1/2" Male Thread x 5/8" 90° Hose Barb
3EL1234	1/2" Male Thread x 3/4" 90° Hose Barb
3EL3414	3/4" Male Thread x 1/4" 90° Hose Barb
3EL3438	3/4" Male Thread x 3/8" 90° Hose Barb
3EL3412	3/4" Male Thread x 1/2" 90° Hose Barb
3EL3458	3/4" Male Thread x 5/8" 90° Hose Barb
3EL34	3/4" Male Thread x 3/4" 90° Hose Barb
3EL34100	3/4" Male Thread x 1" 90° Hose Barb
3EL10012	1" Male Thread x 1/2" 90° Hose Barb
3EL10034	1" Male Thread x 3/4" 90° Hose Barb
3EL100	1" Male Thread x 1" 90° Hose Barb
3EL11434	1-1/4" Male Thread x 3/4" 90° HB
3EL114100	1-1/4" Male Thread x 1" 90° Hose Barb
3EL114	1-1/4" Male Thread x 1-1/4" 90° HB
3EL114112	1-1/4" Male Thread x 1-1/2" 90° HB
3EL112	1-1/2" Male Thread x 1-1/2" 90° HB
3EL200	2" Male Thread x 2" 90° Hose Barb



PART NO	DESCRIPTION
OTHER NOZZLE ACCESSORIES	
3NB1614	11/16" MPS X 1/4" MNPT Nipples

Polypropylene Pipe Fittings

HYPRO®



PART NO	DESCRIPTION
90° HOSE BARB FITTINGS	
3EL14HB	1/4" Hose Barb X 1/4" Hose Barb
3EL3814HB	3/8" Hose Barb X 1/4" Hose Barb
3EL38HB	3/8" Hose Barb X 3/8" Hose Barb
3EL1214HB	1/2" Hose Barb X 1/4" Hose Barb
3EL1238HB	1/2" Hose Barb X 3/4" Hose Barb
3EL12HB	1/2" Hose Barb X 1/2" Hose Barb
3EL58HB	5/8" Hose Barb X 5/8" Hose Barb
3EL3458HB	3/4" Hose Barb X 5/8" Hose Barb
3EL34HB	3/4" Hose Barb X 3/4" Hose Barb
3EL114HB	1-1/4" Hose Barb X 1-1/4" Hose Barb
3EL112HB	1-1/2" Hose Barb X 1-1/2" Hose Barb
3EL200HB	2" Hose Barb X 2" Hose Barb

PART NO	DESCRIPTION
TEES: HOSE BARBS (1 X 2 & 3)	
3T14	1/4" Hose Barb X 1/4" Hose Barb
3T1438	1/4" Hose Barb X 3/8" Hose Barb
3T38	3/8" Hose Barb X 3/8" Hose Barb
3T3812	3/8" Hose Barb X 1/2" Hose Barb
3T1238	1/2" Hose Barb X 3/8" Hose Barb
3T12	1/2" Hose Barb X 1/2" Hose Barb
3T58	5/8" Hose Barb X 5/8" Hose Barb
3T3412	3/4" Hose Barb X 1/2" Hose Barb
3T34	3/4" Hose Barb X 3/4" Hose Barb
3T100	1" Hose Barb X 1" Hose Barb
3T114	1-1/4" Hose Barb X 1-1/4" Hose Barb
3T112	1-1/2" Hose Barb X 1-1/2" Hose Barb
3T200	2" Hose Barb X 2" Hose Barb



PART NO	DESCRIPTION
NOZZLE BODY CAP & NUT	
38027*	11/16" FPS Nozzle Cap for Tip/Barb
3K8414	1/4" Hose Barb for 8027/38027 Cap
3K8438	3/8" Hose Barb for 8027/38027 Cap
3K8412	1/2" Hose Barb for 8027/38027 Cap



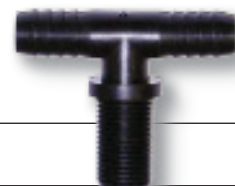
PART NO	DESCRIPTION
HOSE MENDER	
3SHM14	1/4" Hose Barb X 1/4" Hose Barb
3SHM38	3/8" Hose Barb X 3/8" Hose Barb
3SHM1238	1/2" Hose Barb X 3/8" Hose Barb
3SHM12	1/2" Hose Barb ON
3SHM1258	1/2" Hose Barb X 5/8" Hose Barb
3SHM58	5/8" Hose Barb X 5/8" Hose Barb
3SHM34	3/4" Hose Barb X 3/4" Hose Barb



PART NO	DESCRIPTION
HEX PLUG	
3F14	1/4" MALE PIPE THREAD
3F38	3/8" MALE PIPE THREAD
3F12	1/2" MALE PIPE THREAD
3F34	3/4" MALE PIPE THREAD
3F100	1" MALE PIPE THREAD



PART NO	DESCRIPTION
11/16" MPS NOZZLE BODIES	
3NTL38	11/16" MPS x 3/8" Hose Barb Elbows
3NTL12	11/16" MPS x 1/2" Hose Barb Elbows
3NTL34	11/16" MPS x 3/4" Hose Barb Elbows

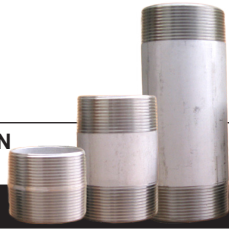


PART NO	DESCRIPTION
11/16" MPS NOZZLE BODIES	
3NTT38	11/16" MPS x 3/8" Hose Barb Tees
3NTT12	11/16" MPS x 1/2" Hose Barb Tees
3NTT34	11/16" MPS x 3/4" Hose Barb Tees

PIPE FITTINGS

Stainless Steel (316) Pipe Fittings

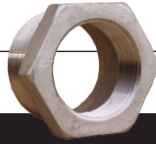
PIPE FITTINGS



PART NO	DESCRIPTION
316 SS NIPPLES	
SS-N-1/8XCLOSE	1/8" X Close SS Nipple
SS-N-1/8X2	1/8" X 2" SS Nipple
SS-N-1/8X3	1/8" X 3" SS Nipple
SS-N-1/8X4	1/8" X 4" SS Nipple
SS-N-1/8X5	1/8" X 5" SS Nipple
SS-N-1/8X6	1/8" X 6" SS Nipple
SS-N-1/4XCLOSE	1/4" X Close SS Nipple
SS-N-1/4X1-1/2	1/4" X 1-1/2" SS Nipple
SS-N-1/4X2	1/4" X 2" SS Nipple
SS-N-1/4X3	1/4" X 3" SS Nipple
SS-N-1/4X4	1/4" X 4" SS Nipple
SS-N-1/4X5	1/4" X 5" SS Nipple
SS-N-1/4X6	1/4" X 6" SS Nipple
SS-N-1/4X8	1/4" X 8" SS Nipple
SS-N-1/4X10	1/4" X 10" SS Nipple
SS-N-1/4X12	1/4" X 12" SS Nipple
SS-N-3/8XCLOSE	3/8" X Close SS Nipple
SS-N-3/8X2	3/8" X 2" SS Nipple
SS-N-3/8X3	3/8" X 3" SS Nipple
SS-N-3/8X4	3/8" X 4" SS Nipple
SS-N-3/8X5	3/8" X 5" SS Nipple
SS-N-3/8X6	3/8" X 6" SS Nipple
SS-N-1/2XCLOSE	1/2" X Close SS Nipple
SS-N-1/2X2	1/2" X 2" SS Nipple
SS-N-1/2X3	1/2" X 3" SS Nipple
SS-N-1/2X4	1/2" X 4" SS Nipple
SS-N-1/2X5	1/2" X 5" SS Nipple
SS-N-1/2X6	1/2" X 6" SS Nipple
SS-N-3/4XCLOSE	3/4" X Close SS Nipple
SS-N-3/4X2	3/4" X 2" SS Nipple
SS-N-3/4X3	3/4" X 3" SS Nipple
SS-N-3/4X4	3/4" X 4" SS Nipple
SS-N-3/4X5	3/4" X 5" SS Nipple
SS-N-3/4X6	3/4" X 6" SS Nipple

PART NO	DESCRIPTION
316 SS NIPPLES	
SS-N-1XCLOSE	1" X Close SS Nipple
SS-N-1X2	1" X 2" SS Nipple
SS-N-1X3	1" X 3" SS Nipple
SS-N-1X4	1" X 4" SS Nipple
SS-N-1X5	1" X 5" SS Nipple
SS-N-1X6	1" X 6" SS Nipple
SS-N-1-1/4XCLOSE	1-1/4" X Close SS Nipple
SS-N-1-1/4X2	1-1/4" X 2" SS Nipple
SS-N-1-1/4X3	1-1/4" X 3" SS Nipple
SS-N-1-1/4X4	1-1/4" X 4" SS Nipple
SS-N-1-1/4X5	1-1/4" X 5" SS Nipple
SS-N-1-1/4X6	1-1/4" X 6" SS Nipple
SS-N-1-1/2XCLOSE	1-1/2" X Close SS Nipple
SS-N-1-1/2X2	1-1/2" X 2" SS Nipple
SS-N-1-1/2X3	1-1/2" X 3" SS Nipple
SS-N-1-1/2X4	1-1/2" X 4" SS Nipple
SS-N-1-1/2X5	1-1/2" X 5" SS Nipple
SS-N-1-1/2X6	1-1/2" X 6" SS Nipple
SS-N-2XCLOSE	2" X Close SS Nipple
SS-N-2X3	2" X 3" SS Nipple
SS-N-2X3-1/2	2" X 3-1/2" SS Nipple
SS-N-2X4	2" X 4" SS Nipple
SS-N-2X5	2" X 5" SS Nipple
SS-N-2X6	2" X 6" SS Nipple
SS-N-2X8	2" X 8" SS Nipple
SS-N-2X10	2" X 10" SS Nipple
SS-N-2X12	2" X 12" SS Nipple
SS-N-3XCLOSE	3" X Close SS Nipple
SS-N-3X4	3" X 4" SS Nipple
SS-N-3X5	3" X 5" SS Nipple
SS-N-3X6	3" X 6" SS Nipple
SS-N-3X8	3" X 8" SS Nipple
SS-N-4XCLOSE	4" X Close SS Nipple
SS-N-4X6	4" X 6" SS Nipple

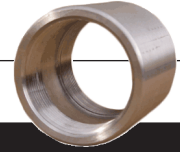
Stainless Steel (316) Pipe Fittings



PART NO	DESCRIPTION
316 SS REDUCING BUSHINGS	
SS-B-1/4X1/8	1/4" X 1/8" Stainless Steel Bushing
SS-B-3/8X1/8	3/8" X 1/8" Stainless Steel Bushing
SS-B-3/8X1/4	3/8" X 1/4" Stainless Steel Bushing
SS-B-1/2X1/8	1/2" X 1/8" Stainless Steel Bushing
SS-B-1/2X1/4	1/2" X 1/4" Stainless Steel Bushing
SS-B-1/2X3/8	1/2" X 3/8" Stainless Steel Bushing
SS-B-3/4X1/4	3/4" X 1/4" Stainless Steel Bushing
SS-B-3/4X3/8	3/4" X 3/8" Stainless Steel Bushing
SS-B-3/4X1/2	3/4" X 1/2" Stainless Steel Bushing
SS-B-1X1/4	1" X 1/4" Stainless Steel Bushing
SS-B-1X3/8	1" X 3/8" Stainless Steel Bushing
SS-B-1X1/2	1" X 1/2" Stainless Steel Bushing
SS-B-1X3/4	1" X 3/4" Stainless Steel Bushing
SS-B-1-1/4X3/4	1-1/4" X 3/4" Stainless Steel Bushing
SS-B-1-1/4X1	1-1/4" X 1" Stainless Steel Bushing
SS-B-1-1/2X3/4	1-1/2" X 3/4" Stainless Steel Bushing
SS-B-1-1/2X1	1-1/2" X 1" Stainless Steel Bushing
SS-B-1-1/2X1-1/4	1-1/2" X 1-1/4" Stainless Steel Bushing
SS-B-2X1/2	2" X 1/2" Stainless Steel Bushing
SS-B-2X3/4	2" X 3/4" Stainless Steel Bushing
SS-B-2X1	2" X 1" Stainless Steel Bushing
SS-B-2X1-1/4	2" X 1-1/4" Stainless Steel Bushing
SS-B-2-1/2X2	2-1/2" X 2" Stainless Steel Bushing
SS-B-3X1-1/2	3" X 1-1/2" Stainless Steel Bushing
SS-B-3X2	3" X 2" Stainless Steel Bushing
SS-B-3X2-1/2	3" X 2-1/2" Stainless Steel Bushing
SS-B-4X2	4" X 2" Stainless Steel Bushing
SS-B-4X3	4" X 3" Stainless Steel Bushing



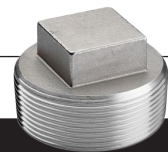
PART NO	DESCRIPTION
316 SS UNIONS	
SS-U-1/4	1/4" SS UNION
SS-U-3/8	3/8" SS UNION
SS-U-1/2	1/2" SS UNION
SS-U-3/4	3/4" SS UNION
SS-U-1	1" SS UNION
SS-U-1-1/4	1-1/4" SS UNION
SS-U-1-1/2	1-1/2" SS UNION
SS-U-2	2" SS UNION
SS-U-3	3" SS UNION



PART NO	DESCRIPTION
316 SS COUPLINGS	
SS-CO-1/8	1/8" SS COUPLING
SS-CO-1/4	1/4" SS COUPLING
SS-CO-3/8	3/8" SS COUPLING
SS-CO-1/2	1/2" SS COUPLING
SS-CO-3/4	3/4" SS COUPLING
SS-CO-1	1" SS COUPLING
SS-CO-1-1/4	1-1/4" SS COUPLING
SS-CO-1-1/2	1-1/2" SS COUPLING
SS-CO-2	2" SS COUPLING
SS-CO-3	3" SS COUPLING
SS-CO-4	4" SS COUPLING



PART NO	DESCRIPTION
316 SS CAPS	
SS-CA-1/8	1/8" SS CAP
SS-CA-1/4	1/4" SS CAP
SS-CA-3/8	3/8" SS CAP
SS-CA-1/2	1/2" SS CAP
SS-CA-3/4	3/4" SS CAP
SS-CA-1	1" SS CAP
SS-CA-1-1/4	1-1/4" SS CAP
SS-CA-1-1/2	1-1/2" SS CAP
SS-CA-2	2" SS CAP
SS-CA-3	3" SS CAP



PART NO	DESCRIPTION
316 SS PLUGS	
SS-P-1/8	1/8" SS PLUG
SS-P-1/4	1/4" SS PLUG
SS-P-3/8	3/8" SS PLUG
SS-P-1/2	1/2" SS PLUG
SS-P-3/4	3/4" SS PLUG
SS-P-1	1" SS PLUG
SS-P-1-1/4	1-1/4" SS PLUG
SS-P-1-1/2	1-1/2" SS PLUG
SS-P-2	2" SS PLUG
SS-P-3	3" SS PLUG

Stainless Steel (316) Pipe Fittings

PIPE FITTINGS



PART NO	DESCRIPTION
316 SS CROSSES	
SS-CR-1/8	1/8" SS CROSS
SS-CR-1/4	1/4" SS CROSS
SS-CR-3/8	3/8" SS CROSS
SS-CR-1/2	1/2" SS CROSS
SS-CR-3/4	3/4" SS CROSS
SS-CR-1	1" SS CROSS
SS-CR-1-1/4	1-1/4" SS CROSS
SS-CR-1-1/2	1-1/2" SS CROSS
SS-CR-2	2" SS CROSS
SS-CR-3	3" SS CROSS



PART NO	DESCRIPTION
316 SS TEES	
SS-T-1/8	1/8" SS TEE
SS-T-1/4	1/4" SS TEE
SS-T-3/8	3/8" SS TEE
SS-T-1/2	1/2" SS TEE
SS-T-3/4	3/4" SS TEE
SS-T-1	1" SS TEE
SS-T-1-1/4	1-1/4" SS TEE
SS-T-1-1/2	1-1/2" SS TEE
SS-T-2	2" SS TEE
SS-T-3	3" SS TEE



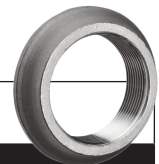
PART NO	DESCRIPTION
316 SS 90° ELBOWS	
SS-90L-1/8	1/8" SS 90° ELBOW
SS-90L-1/4	1/4" SS 90° ELBOW
SS-90L-3/8	3/8" SS 90° ELBOW
SS-90L-1/2	1/2" SS 90° ELBOW
SS-90L-3/4	3/4" SS 90° ELBOW
SS-90L-1	1" SS 90° ELBOW
SS-90L-1-1/4	1-1/4" SS 90° ELBOW
SS-90L-1-1/2	1-1/2" SS 90° ELBOW
SS-90L-2	2" SS 90° ELBOW
SS-90L-3	3" SS 90° ELBOW



PART NO	DESCRIPTION
316 SS 90° STREET ELBOWS	
SS-90ST-1/8	1/8" SS 90° STREET ELBOW
SS-90ST-1/4	1/4" SS 90° STREET ELBOW
SS-90ST-3/8	3/8" SS 90° STREET ELBOW
SS-90ST-1/2	1/2" SS 90° STREET ELBOW
SS-90ST-3/4	3/4" SS 90° STREET ELBOW
SS-90ST-1	1" SS 90° STREET ELBOW
SS-90ST-1-1/4	1-1/4" SS 90° STREET ELBOW
SS-90ST-1-1/2	1-1/2" SS 90° STREET ELBOW
SS-90ST-2	2" SS 90° STREET ELBOW
SS-90ST-3	3" SS 90° STREET ELBOW



PART NO	DESCRIPTION
316 SS 45° ELBOWS	
SS-45L1/8	1/8" SS 45° STREET ELBOW
SS-45L-1/4	1/4" SS 45° STREET ELBOW
SS-45L-3/8	3/8" SS 45° STREET ELBOW
SS-45L-1/2	1/2" SS 45° STREET ELBOW
SS-45L-3/4	3/4" SS 45° STREET ELBOW
SS-45L-1	1" SS 45° STREET ELBOW
SS-45L-1-1/4	1-1/4" SS 45° STREET ELBOW
SS-45L-1-1/2	1-1/2" SS 45° STREET ELBOW
SS-45L-2	2" SS 45° STREET ELBOW
SS-45L-3	3" SS 45° STREET ELBOW



PART NO	DESCRIPTION
316 SS BONNIE FLANGES	
SS-F-1/4-BONNIE	1/4" SS BONNIE FLANGE
SS-F-3/8-BONNIE	3/8" SS BONNIE FLANGE
SS-F-1/2-BONNIE	1/2" SS BONNIE FLANGE
SS-F-3/4-BONNIE	3/4" SS BONNIE FLANGE
SS-F-1-BONNIE	1" SS BONNIE FLANGE
SS-F-1-1/4-BONNIE	1-1/4" SS BONNIE FLANGE
SS-F-1-1/2-BONNIE	1-1/2" SS BONNIE FLANGE
SS-F-2-BONNIE	2" SS BONNIE FLANGE
SS-F-3-BONNIE	3" SS BONNIE FLANGE
SS-F-4-BONNIE	4" SS BONNIE FLANGE

Stainless Steel (316) Pipe Fittings

Malleable Iron (Black) Pipe Fittings



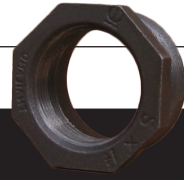
PART NO	DESCRIPTION
316 SS BLIND FLANGES	
SS-F-2-BLIND	2" SS BLIND FLANGE
SS-F-3-BLIND	3" SS BLIND FLANGE



PART NO	DESCRIPTION
316 SS THREADED FLANGES	
SS-F-2-THRD	2" SS THREADED FLANGE
SS-F-3-THRD	3" SS THREADED FLANGE
SS-F-4-THRD	4" SS THREADED FLANGE



PART NO	DESCRIPTION
316 SS HOSE BARBS	
HB025SS	1/4" Male Thread x 1/4" Hose Shank
HB025-038SS	1/4" Male Thread x 3/8" Hose Shank
HB025-050SS	1/4" Male Thread x 1/2" Hose Shank
HB038SS	3/8" Male Thread x 3/8" Hose Shank
HB038-050SS	3/8" Male Thread x 1/2" Hose Shank
HB050SS	1/2" Male Thread x 1/2" Hose Shank
HB050-058SS	1/2" Male Thread x 5/8" Hose Shank
HB050-075SS	1/2" Male Thread x 3/4" Hose Shank
HB075-050SS	3/4" Male Thread x 1/2" Hose Shank
HB075SS	3/4" Male Thread x 3/4" Hose Shank
HB075-100SS	3/4" Male Thread x 1" Hose Shank
HB100-075SS	1" Male Thread x 3/4" Hose Shank
HB100SS	1" Male Thread x 1" Hose Shank
HB125SS	1-1/4" Male Thread x 1-1/4" Hose Shank
HB150SS	1-1/2" Male Thread x 1-1/2" Hose Shank
HB200SS	2" Male Thread x 2" Hose Shank
HB300SS	3" Male Thread x 3" Hose Shank



PART NO	DESCRIPTION
MALLEABLE IRON (BLACK) REDUCING BUSHINGS	
BI-B-1/4X1/8	1/4" X 1/8" MALLEABLE IRON BUSHING
BI-B-3/8X1/4	3/8" X 1/4" MALLEABLE IRON BUSHING
BI-B-1/2X1/4	1/2" X 1/4" MALLEABLE IRON BUSHING
BI-B-1/2X3/8	1/2" X 3/8" MALLEABLE IRON BUSHING
BI-B-3/4X1/4	3/4" X 1/4" MALLEABLE IRON BUSHING
BI-B-3/4X3/8	3/4" X 3/8" MALLEABLE IRON BUSHING
BI-B-3/4X1/2	3/4" X 1/2" MALLEABLE IRON BUSHING
BI-B-1X1/4	1" X 1/4" MALLEABLE IRON BUSHING
BI-B-1X3/8	1" X 3/8" MALLEABLE IRON BUSHING
BI-B-1X1/2	1" X 1/2" MALLEABLE IRON BUSHING
BI-B-1X3/4	1" X 3/4" MALLEABLE IRON BUSHING
BI-B-1-1/4X1/2	1-1/4" X 1/2" MALLEABLE IRON BUSHING
BI-B-1-1/4X3/4	1-1/4" X 3/4" MALLEABLE IRON BUSHING
BI-B-1-1/4X1	1-1/4" X 1" MALLEABLE IRON BUSHING
BI-B-1-1/2X1/2	1-1/2" X 1/2" MALLEABLE IRON BUSHING
BI-B-1-1/2X3/4	1-1/2" X 3/4" MALLEABLE IRON BUSHING
BI-B-1-1/2X1	1-1/2" X 1" MALLEABLE IRON BUSHING
BI-B-1-1/2X1 1/4	1-1/2" X 1-1/4" MALLEABLE IRON BUSHING
BI-B-2X3/4	2" X 3/4" MALLEABLE IRON BUSHING
BI-B-2X1	2" X 1" MALLEABLE IRON BUSHING
BI-B-2X1-1/4	2" X 1-1/4" MALLEABLE IRON BUSHING
BI-B-2X1-1/2	2" X 1-1/2" MALLEABLE IRON BUSHING
BI-B-2-1/2X1	2-1/2" X 1" MALLEABLE IRON BUSHING
BI-B-2-1/2X1 1/2	2-1/2" X 1-1/2" MALLEABLE IRON BUSHING
BI-B-2-1/2X2	2-1/2" X 2" MALLEABLE IRON BUSHING
BI-B-3X1-1/2	3" X 1-1/2" MALLEABLE IRON BUSHING
BI-B-3X2	3" X 2" MALLEABLE IRON BUSHING
BI-B-3X2-1/2	3" X 2-1/2" MALLEABLE IRON BUSHING
BI-B-4X3	4" X 3" MALLEABLE IRON BUSHING

Teflon Tape

An effective, reliable sealant used on MPT fittings to help prevent leaks. This easy-to-use economical sealant keeps water, gas and air from leaking through threaded connections in plumbing pipes.

How to Order:

Teflon Tape.....1"

Teflon Tape.....1/2"



Malleable Iron (Black) Pipe Fittings

Features:

- Standard 150#
- Black
- NPT Threads



PART NO	DESCRIPTION
PIPE NIPPLES (BLACK)	
BI-N-1/8XCLOSE	1/8" X CLOSE BLACK IRON NIPPLE
BI-N-1/8X2	1/8" X 2" BLACK IRON NIPPLE
BI-N-1/8X3	1/8" X 3" BLACK IRON NIPPLE
BI-N-1/8X4	1/8" X 4" BLACK IRON NIPPLE
BI-N-1/8X5	1/8" X 5" BLACK IRON NIPPLE
BI-N-1/8X6	1/8" X 6" BLACK IRON NIPPLE
BI-N-1/4XCLOSE	1/4" X CLOSE BLACK IRON NIPPLE
BI-N-1/4X1-1/2	1/4" X 1-1/2" BLACK IRON NIPPLE
BI-N-1/4X2	1/4" X 2" BLACK IRON NIPPLE
BI-N-1/4X2-1/2	1/4" X 2-1/2" BLACK IRON NIPPLE
BI-N-1/4X3	1/4" X 3" BLACK IRON NIPPLE
BI-N-1/4X4	1/4" X 4" BLACK IRON NIPPLE
BI-N-1/4X5	1/4" X 5" BLACK IRON NIPPLE
BI-N-1/4X6	1/4" X 6" BLACK IRON NIPPLE
BI-N-1/4X8	1/4" X 8" BLACK IRON NIPPLE
BI-N-1/4X10	1/4" X 10" BLACK IRON NIPPLE
BI-N-1/4X12	1/4" X 12" BLACK IRON NIPPLE
BI-N-3/8XCLOSE	3/8" X CLOSE BLACK IRON NIPPLE
BI-N-3/8X2	3/8" X 2" BLACK IRON NIPPLE
BI-N-3/8X3	3/8" X 3" BLACK IRON NIPPLE
BI-N-3/8X4	3/8" X 4" BLACK IRON NIPPLE
BI-N-3/8X5	3/8" X 5" BLACK IRON NIPPLE
BI-N-3/8X6	3/8" X 6" BLACK IRON NIPPLE
BI-N-1/2XCLOSE	1/2" X CLOSE BLACK IRON NIPPLE
BI-N-1/2X2	1/2" X 2" BLACK IRON NIPPLE
BI-N-1/2X3	1/2" X 3" BLACK IRON NIPPLE
BI-N-1/2X4	1/2" X 4" BLACK IRON NIPPLE
BI-N-1/2X5	1/2" X 5" BLACK IRON NIPPLE
BI-N-1/2X6	1/2" X 6" BLACK IRON NIPPLE
BI-N-1/2X8	1/2" X 8" BLACK IRON NIPPLE
BI-N-3/4XCLOSE	3/4" X CLOSE BLACK IRON NIPPLE
BI-N-3/4X2	3/4" X 2" BLACK IRON NIPPLE
BI-N-3/4X3	3/4" X 3" BLACK IRON NIPPLE
BI-N-3/4X4	3/4" X 4" BLACK IRON NIPPLE
BI-N-3/4X5	3/4" X 5" BLACK IRON NIPPLE
BI-N-3/4X6	3/4" X 6" BLACK IRON NIPPLE

PIPE FITTINGS

PART NO	DESCRIPTION
PIPE NIPPLES (BLACK)	
BI-N-1XCLOSE	1" X CLOSE BLACK IRON NIPPLE
BI-N-1X2	1" X 2" BLACK IRON NIPPLE
BI-N-1X3	1" X 3" BLACK IRON NIPPLE
BI-N-1X4	1" X 4" BLACK IRON NIPPLE
BI-N-1X5	1" X 5" BLACK IRON NIPPLE
BI-N-1X6	1" X 6" BLACK IRON NIPPLE
BI-N-1-1/4XCLOSE	1-1/4" X CLOSE BLACK IRON NIPPLE
BI-N-1-1/4X2	1-1/4" X 2" BLACK IRON NIPPLE
BI-N-1-1/4X3	1-1/4" X 3" BLACK IRON NIPPLE
BI-N-1-1/4X4	1-1/4" X 4" BLACK IRON NIPPLE
BI-N-1-1/4X5	1-1/4" X 5" BLACK IRON NIPPLE
BI-N-1-1/4X6	1-1/4" X 6" BLACK IRON NIPPLE
I-N-1-1/2XCLOSE	1-1/2" X CLOSE BLACK IRON NIPPLE
BI-N-1-1/2X2	1-1/2" X 2" BLACK IRON NIPPLE
BI-N-1-1/2X3	1-1/2" X 3" BLACK IRON NIPPLE
BI-N-1-1/2X4	1-1/2" X 4" BLACK IRON NIPPLE
BI-N-1-1/2X5	1-1/2" X 5" BLACK IRON NIPPLE
BI-N-1-1/2X6	1-1/2" X 6" BLACK IRON NIPPLE
BI-N-2XCLOSE	2" X CLOSE BLACK IRON NIPPLE
BI-N-2X3	2" X 3" BLACK IRON NIPPLE
BI-N-2X4	2" X 4" BLACK IRON NIPPLE
BI-N-2X5	2" X 5" BLACK IRON NIPPLE
BI-N-2X6	2" X 6" BLACK IRON NIPPLE
BI-N-2X8	2" X 8" BLACK IRON NIPPLE
BI-N-2X10	2" X 10" BLACK IRON NIPPLE
BI-N-2X12	2" X 12" BLACK IRON NIPPLE
BI-N-3XCLOSE	3" X CLOSE BLACK IRON NIPPLE
BI-N-3X4	3" X 4" BLACK IRON NIPPLE
BI-N-3X5	3" X 5" BLACK IRON NIPPLE
BI-N-3X6	3" X 6" BLACK IRON NIPPLE
BI-N-4XCLOSE	4" X CLOSE BLACK IRON NIPPLE

Pipe Sealant



PART NO	DESCRIPTION
PIPE SEALANT	
RS21	RectorSeal® No. 21™ (8 oz-24/case)
RSTB	RectorSeal® Tru-Blu™ (8 oz-24/case)
RSTB-PINT	RectorSeal® Tru-Blu™ (16 oz)

Malleable Iron (Black) Pipe Fittings



PART NO	DESCRIPTION
MALLEABLE IRON (BLACK) COUPLING	
BI-CO-1/8	1/8" MALLEABLE IRON COUPLING
BI-CO-1/4	1/4" MALLEABLE IRON COUPLING
BI-CO-3/8	3/8" MALLEABLE IRON COUPLING
BI-CO-1/2	1/2" MALLEABLE IRON COUPLING
BI-CO-3/4	3/4" MALLEABLE IRON COUPLING
BI-CO-1	1" MALLEABLE IRON COUPLER
BI-CO-1-1/4	1-1/4" MALLEABLE IRON COUPLER
BI-CO-1-1/2	1-1/2" MALLEABLE IRON COUPLER
BI-CO-2	2" MALLEABLE IRON COUPLER
BI-CO-3	3" MALLEABLE IRON COUPLER
BI-CO-4	4" MALLEABLE IRON COUPLER



PART NO	DESCRIPTION
MALLEABLE IRON (BLACK) CAPS	
BI-CA-1/4	1/4" MALLEABLE IRON CAP
BI-CA-3/8	3/8" MALLEABLE IRON CAP
BI-CA-1/2	1/2" MALLEABLE IRON CAP
BI-CA-3/4	3/4" MALLEABLE IRON CAP
BI-CA-1	1" MALLEABLE IRON CAP
BI-CA-1-1/4	1-1/4" MALLEABLE IRON CAP
BI-CA-1-1/2	1-1/2" MALLEABLE IRON CAP
BI-CA-2	2" MALLEABLE IRON CAP
BI-CA-3	3" MALLEABLE IRON CAP
BI-CA-4	4" MALLEABLE IRON CAP



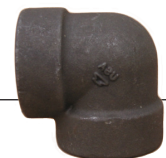
PART NO	DESCRIPTION
MALLEABLE IRON (BLACK) PLUGS	
BI-P-1/4	1/4" MALLEABLE IRON PLUG
BI-P-3/8	3/8" MALLEABLE IRON PLUG
BI-P-1/2	1/2" MALLEABLE IRON PLUG
BI-P-3/4	3/4" MALLEABLE IRON PLUG
BI-P-1	1" MALLEABLE IRON PLUG
BI-P-1-1/4	1-1/4" MALLEABLE IRON PLUG
BI-P-1-1/2	1-1/2" MALLEABLE IRON PLUG
BI-P-2	2" MALLEABLE IRON PLUG
BI-P-3	3" MALLEABLE IRON PLUG
BI-P-4	4" MALLEABLE IRON PLUG



PART NO	DESCRIPTION
MALLEABLE IRON (BLACK) CROSSES	
BI-CR-1/8	1/8" MALLEABLE IRON CROSS
BI-CR-1/4	1/4" MALLEABLE IRON CROSS
BI-CR-3/8	3/8" MALLEABLE IRON CROSS
BI-CR-1/2	1/2" MALLEABLE IRON CROSS
BI-CR-3/4	3/4" MALLEABLE IRON CROSS
BI-CR-1	1" MALLEABLE IRON CROSS
BI-CR-1-1/4	1-1/4" MALLEABLE IRON CROSS
BI-CR-1-1/2	1-1/2" MALLEABLE IRON CROSS
BI-CR-2	2" MALLEABLE IRON CROSS
BI-CR-3	3" MALLEABLE IRON CROSS



PART NO	DESCRIPTION
MALLEABLE IRON (BLACK) TEES	
BI-T-1/4	1/4" MALLEABLE IRON TEE
BI-T-3/8	3/8" MALLEABLE IRON TEE
BI-T-1/2	1/2" MALLEABLE IRON TEE
BI-T-3/4	3/4" MALLEABLE IRON TEE
BI-T-1	1" MALLEABLE IRON TEE
BI-T-1-1/4	1-1/4" MALLEABLE IRON TEE
BI-T-1-1/2	1-1/2" MALLEABLE IRON TEE
BI-T-2	2" MALLEABLE IRON TEE
BI-T-3	3" MALLEABLE IRON TEE



PART NO	DESCRIPTION
MALLEABLE IRON (BLACK) 90° ELBOWS	
BI-90L-1/4	1/4" MALLEABLE IRON 90° ELBOW
BI-90L-3/8	3/8" MALLEABLE IRON 90° ELBOW
BI-90L-1/2	1/2" MALLEABLE IRON 90° ELBOW
BI-90L-3/4	3/4" MALLEABLE IRON 90° ELBOW
BI-90L-1	1" MALLEABLE IRON 90° ELBOW
BI-90L-1-1/4	1-1/4" MALLEABLE IRON 90° ELBOW
BI-90L-1-1/2	1-1/2" MALLEABLE IRON 90° ELBOW
BI-90L-2	2" MALLEABLE IRON 90° ELBOW
BI-90L-3	3" MALLEABLE IRON 90° ELBOW

Malleable Iron (Black) Pipe Fittings

PIPE FITTINGS




PART NO	DESCRIPTION
MALLEABLE IRON (BLACK) 90° STREET ELBOWS	
BI-90ST-1/4	1/4" MALLEABLE IRON 90° STREET ELBOW
BI-90ST-3/8	3/8" MALLEABLE IRON 90° STREET ELBOW
BI-90ST-1/2	1/2" MALLEABLE IRON 90° STREET ELBOW
BI-90ST-3/4	3/4" MALLEABLE IRON 90° STREET ELBOW
BI-90ST-1	1" MALLEABLE IRON 90° STREET ELBOW
BI-90ST-1-1/4	1-1/4" MALLEABLE IRON 90° STREET ELBOW
BI-90ST-1-1/2	1-1/2" MALLEABLE IRON 90° STREET ELBOW
BI-90ST-2	2" MALLEABLE IRON 90° STREET ELBOW
BI-90ST-3	3" MALLEABLE IRON 90° STREET ELBOW




PART NO	DESCRIPTION
MALLEABLE IRON (BLACK) 45° ELBOWS	
BI-45L-1/4	1/4" MALLEABLE IRON 45° ELBOW
BI-45L-3/8	3/8" MALLEABLE IRON 45° ELBOW
BI-45L-1/2	1/2" MALLEABLE IRON 45° ELBOW
BI-45L-3/4	3/4" MALLEABLE IRON 45° ELBOW
BI-45L-1	1" MALLEABLE IRON 45° ELBOW
BI-45L-1-1/4	1-1/4" MALLEABLE IRON 45° ELBOW
BI-45L-1-1/2	1-1/2" MALLEABLE IRON 45° ELBOW
BI-45L-2	2" MALLEABLE IRON 45° ELBOW
BI-45L-3	3" MALLEABLE IRON 45° ELBOW



PART NO	DESCRIPTION
MALLEABLE IRON (BLACK) 45° STREET ELBOWS	
BI-45L-1/4	1/4" MALLEABLE IRON 45° STREET ELBOW
BI-45L-3/8	3/8" MALLEABLE IRON 45° STREET ELBOW
BI-45L-1/2	1/2" MALLEABLE IRON 45° STREET ELBOW
BI-45L-3/4	3/4" MALLEABLE IRON 45° STREET ELBOW
BI-45L-1	1" MALLEABLE IRON 45° STREET ELBOW
BI-45L-1-1/4	1-1/4" MALLEABLE IRON 45° STREET ELBOW
BI-45L-1-1/2	1-1/2" MALLEABLE IRON 45° STREET ELBOW
BI-45L-2	2" MALLEABLE IRON 45° STREET ELBOW
BI-45L-3	3" MALLEABLE IRON 45° STREET ELBOW




PART NO	DESCRIPTION
MALLEABLE IRON (BLACK) UNIONS	
BI-U-1/4	1/4" MALLEABLE IRON 45° UNION
BI-U-3/8	3/8" MALLEABLE IRON 45° UNION
BI-U-1/2	1/2" MALLEABLE IRON 45° UNION
BI-U-3/4	3/4" MALLEABLE IRON 45° UNION
BI-U-1	1" MALLEABLE IRON 45° UNION
BI-U-1-1/4	1-1/4" MALLEABLE IRON 45° UNION
BI-U-1-1/2	1-1/2" MALLEABLE IRON 45° UNION
BI-U-2	2" MALLEABLE IRON 45° UNION
BI-U-3	3" MALLEABLE IRON 45° UNION



PART NO	DESCRIPTION
MALLEABLE IRON BLIND FLANGES	
BI-F-2-BLIND	2" MALLEABLE IRON BLIND FLANGE
BI-F-3-BLIND	3" MALLEABLE IRON BLIND FLANGE



PART NO	DESCRIPTION
MALLEABLE IRON THREADED FLANGES	
BI-F-2-THRD	2" MALLEABLE IRON THREADED FLANGE
BI-F-3-THRD	3" MALLEABLE IRON THREADED FLANGE



PART NO	DESCRIPTION
MALLEABLE IRON BONNIE FLANGES	
BI-F-1/4-BONNIE	1/4" MALLEABLE IRON 45° BONNIE FLANGE
BI-F-3/8-BONNIE	3/8" MALLEABLE IRON 45° BONNIE FLANGE
BI-F-1/2-BONNIE	1/2" MALLEABLE IRON 45° BONNIE FLANGE
BI-F-3/4-BONNIE	3/4" MALLEABLE IRON 45° BONNIE FLANGE
BI-F-1-BONNIE	1" MALLEABLE IRON 45° BONNIE FLANGE
BI-F-1-1/4-BONNIE	1-1/4" MALLEABLE IRON 45° BONNIE FLANGE
BI-F-1-1/2-BONNIE	1-1/2" MALLEABLE IRON 45° BONNIE FLANGE
BI-F-2-BONNIE	2" MALLEABLE IRON 45° BONNIE FLANGE
BI-F-3-BONNIE	3" MALLEABLE IRON 45° BONNIE FLANGE
BI-F-4-BONNIE	4" MALLEABLE IRON 45° BONNIE FLANGE

Forged Steel Pipe Fittings

Features:

- 3000# Heavy Duty
- NPT Threads



PART NO	DESCRIPTION
EXTRA HEAVY BLACK IRON NIPPLES	
XH-N-1/4XCLOSE	1/4" X CLOSE EXTRA HEAVY NIPPLE
XH-N-1/4X1-1/2	1/4" X 1-1/2" EXTRA HEAVY NIPPLE
XH-N-1/4X2	1/4" X 2" EXTRA HEAVY NIPPLE
XH-N-1/4X2-1/2	1/4" X 2-1/2" EXTRA HEAVY NIPPLE
XH-N-1/4X3	1/4" X 3" EXTRA HEAVY NIPPLE
XH-N-1/4X3-1/2	1/4" X 3-1/2" EXTRA HEAVY NIPPLE
XH-N-1/4X4	1/4" X 4" EXTRA HEAVY NIPPLE
XH-N-1/4X4-1/2	1/4" X 4-1/2" EXTRA HEAVY NIPPLE
XH-N-1/4X5	1/4" X 5" EXTRA HEAVY NIPPLE
XH-N-1/4X5-1/2	1/4" X 5-1/2" EXTRA HEAVY NIPPLE
XH-N-1/4X6	1/4" X 6" EXTRA HEAVY NIPPLE
XH-N-1/4X8	1/4" X 8" EXTRA HEAVY NIPPLE
XH-N-1/4X10	1/4" X 10" EXTRA HEAVY NIPPLE
XH-N-1/2XCLOSE	1/2" X CLOSE EXTRA HEAVY NIPPLE
XH-N-1/2X1-1/2	1/2" X 1-1/2" EXTRA HEAVY NIPPLE
XH-N-1/2X2	1/2" X 2" EXTRA HEAVY NIPPLE
XH-N-1/2X2-1/2	1/2" X 2-1/2" EXTRA HEAVY NIPPLE
XH-N-1/2X3	1/2" X 3" EXTRA HEAVY NIPPLE
XH-N-1/2X3-1/2	1/2" X 3-1/2" EXTRA HEAVY NIPPLE
XH-N-1/2X4	1/2" X 4" EXTRA HEAVY NIPPLE
XH-N-1/2X4-1/2	1/2" X 4-1/2" EXTRA HEAVY NIPPLE
XH-N-1/2X5	1/2" X 5" EXTRA HEAVY NIPPLE
XH-N-1/2X5-1/2	1/2" X 5-1/2" EXTRA HEAVY NIPPLE
XH-N-1/2X6	1/2" X 6" EXTRA HEAVY NIPPLE
XH-N-1/2X8	1/2" X 8" EXTRA HEAVY NIPPLE
XH-N-1/2X10	1/2" X 10" EXTRA HEAVY NIPPLE
XH-N-3/8XCLOSE	3/8" X CLOSE EXTRA HEAVY NIPPLE
XH-N-3/8X1-1/2	3/8" X 1-1/2" EXTRA HEAVY NIPPLE
XH-N-3/8X2	3/8" X 2" EXTRA HEAVY NIPPLE
XH-N-3/8X2-1/2	3/8" X 2-1/2" EXTRA HEAVY NIPPLE
XH-N-3/8X3	3/8" X 3" EXTRA HEAVY NIPPLE
XH-N-3/8X3-1/2	3/8" X 3-1/2" EXTRA HEAVY NIPPLE
XH-N-3/8X4	3/8" X 4" EXTRA HEAVY NIPPLE
XH-N-3/8X4-1/2	3/8" X 4-1/2" EXTRA HEAVY NIPPLE

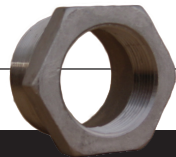
PART NO	DESCRIPTION
EXTRA HEAVY BLACK IRON NIPPLES	
XH-N-3/8X5	3/8" X 5" EXTRA HEAVY NIPPLE
H-N-3/8X5-1/2	3/8" X 5-1/2" EXTRA HEAVY NIPPLE
XH-N-3/8X6	3/8" X 6" EXTRA HEAVY NIPPLE
XH-N-3/8X8	3/8" X 8" EXTRA HEAVY NIPPLE
XH-N-3/8X10	3/8" X 10" EXTRA HEAVY NIPPLE
XH-N-3/4XCLOSE	3/4" X CLOSE EXTRA HEAVY NIPPLE
XH-N-3/4X1-1/2	3/4" X 1-1/2" EXTRA HEAVY NIPPLE
XH-N-3/4X2	3/4" X 2" EXTRA HEAVY NIPPLE
XH-N-3/4X2-1/2	3/4" X 2-1/2" EXTRA HEAVY NIPPLE
XH-N-3/4X3	3/4" X 3" EXTRA HEAVY NIPPLE
XH-N-3/4X3-1/2	3/4" X 3-1/2" EXTRA HEAVY NIPPLE
XH-N-3/4X4	3/4" X 4" EXTRA HEAVY NIPPLE
XH-N-3/4X4-1/2	3/4" X 4-1/2" EXTRA HEAVY NIPPLE
XH-N-3/4X5	3/4" X 5" EXTRA HEAVY NIPPLE
XH-N-3/4X5-1/2	3/4" X 5-1/2" EXTRA HEAVY NIPPLE
XH-N-3/4X6	3/4" X 6" EXTRA HEAVY NIPPLE
XH-N-3/4X8	3/4" X 8" EXTRA HEAVY NIPPLE
XH-N-1XCLOSE	1" X CLOSE EXTRA HEAVY NIPPLE
XH-N-1X2	1" X 2" EXTRA HEAVY NIPPLE
XH-N-1X3	1" X 3" EXTRA HEAVY NIPPLE
XH-N-1X3-1/2	1" X 3-1/2" EXTRA HEAVY NIPPLE
XH-N-1X4	1" X 4" EXTRA HEAVY NIPPLE
XH-N-1X4-1/2	1" X 4-1/2" EXTRA HEAVY NIPPLE
XH-N-1X5	1" X 5" EXTRA HEAVY NIPPLE
XH-N-1X5-1/2	1" X 5-1/2" EXTRA HEAVY NIPPLE
XH-N-1X6	1" X 6" EXTRA HEAVY NIPPLE
XH-N-1X8	XH-N-1X8
XH-N-1X10	1" X 10" EXTRA HEAVY NIPPLE
XH-N-1-1/4XCLOSE	1-1/4" X CLOSE EXTRA HEAVY NIPPLE
XH-N-1-1/4X2	1-1/4" X 2" EXTRA HEAVY NIPPLE
XH-N-1-1/4X21/2	1-1/4" X 2-1/2" EXTRA HEAVY NIPPLE
XH-N-1-1/4X3	1-1/4" X 3" EXTRA HEAVY NIPPLE
XH-N-1-1/4X4	1-1/4" X 4" EXTRA HEAVY NIPPLE
XH-N-1-1/2XCLOSE	1-1/2" X CLOSE EXTRA HEAVY NIPPLE
XH-N-2XCLOSE	2" X CLOSE EXTRA HEAVY NIPPLE
XH-N-2X2-1/2	2" X 2-1/2" EXTRA HEAVY NIPPLE
XH-N-2X3	2" X 3" EXTRA HEAVY NIPPLE
XH-N-2X4	2" X 4" EXTRA HEAVY NIPPLE
XH-N-2X5	2" X 5" EXTRA HEAVY NIPPLE
XH-N-2X6	2" X 6" EXTRA HEAVY NIPPLE

Forged Steel Pipe Fittings

PIPE FITTINGS



PART NO	DESCRIPTION
FORGED STEEL COUPLINGS	
FS-CO-1/4	1/4" FORGED STEEL COUPLING
FS-CO-3/8	3/8" FORGED STEEL COUPLING
FS-CO-1/2	1/2" FORGED STEEL COUPLING
FS-CO-3/4	3/4" FORGED STEEL COUPLING
FS-CO-1	1" FORGED STEEL COUPLER
FS-CO-1-1/4	1-1/4" FORGED STEEL COUPLER
FS-CO-1-1/2	1-1/2" FORGED STEEL COUPLER
FS-CO-2	2" FORGED STEEL COUPLER
FS-CO-3	3" FORGED STEEL COUPLER



PART NO	DESCRIPTION
FORGED STEEL BUSHINGS	
FS-B-3/8X1/4	3/8" X 1/4" FORGED STEEL BUSHING
FS-B-1/2X1/4	1/2" X 1/4" FORGED STEEL BUSHING
FS-B-1/2X3/8	1/2" X 3/8" FORGED STEEL BUSHING
FS-B-3/4X3/8	3/4" X 3/8" FORGED STEEL BUSHING
FS-B-3/4X1/4	3/4" X 1/4" FORGED STEEL BUSHING
FS-B-3/4X1/2	3/4" X 1/2" FORGED STEEL BUSHING
FS-B-1X1/4	1" X 1/4" FORGED STEEL BUSHING
FS-B-1X3/8	1" X 3/8" FORGED STEEL BUSHING
FS-B-1X1/2	1" X 1/2" FORGED STEEL BUSHING
FS-B-1X3/4	1" X 3/4" FORGED STEEL BUSHING
FS-B-1-1/4X1	1-1/4" X 1" FORGED STEEL BUSHING
FS-B-1-1/2X1	1-1/2" X 1" FORGED STEEL BUSHING
FS-B-2X1	2" X 1" FORGED STEEL BUSHING
FS-B-2X1-1/4	2" X 1-1/4" FORGED STEEL BUSHING
FS-B-2X1-1/2	2" X 1-1/2" FORGED STEEL BUSHING
FS-B-2-1/2X1	2-1/2" X 1" FORGED STEEL BUSHING



PART NO	DESCRIPTION
FORGED STEEL PLUGS	
FS-P-1/8	1/8" FORGED STEEL PLUG
FS-P-1/4	1/4" FORGED STEEL PLUG
FS-P-3/8	3/8" FORGED STEEL PLUG
FS-P-1/2	1/2" FORGED STEEL PLUG
FS-P-3/4	3/4" FORGED STEEL PLUG
FS-P-1	1" FORGED STEEL PLUG
FS-P-2	2" FORGED STEEL PLUG



PART NO	DESCRIPTION
FORGED STEEL TEES	
FS-T-1/4	1/4" FORGED STEEL TEE
FS-T-3/8	3/8" FORGED STEEL TEE
FS-T-1/2	1/2" FORGED STEEL TEE
FS-T-3/4	3/4" FORGED STEEL TEE
FS-T-1	1" FORGED STEEL TEE
FS-T-1-1/4	1-1/4" FORGED STEEL TEE
FS-T-1-1/2	1-1/2" FORGED STEEL TEE
FS-T-2	2" FORGED STEEL TEE



PART NO	DESCRIPTION
FORGED STEEL 90° ELBOWS	
FS-90L-1/4	1/4" FORGED STEEL 90° ELBOW
FS-90L-3/8	3/8" FORGED STEEL 90° ELBOW
FS-90L-1/2	1/2" FORGED STEEL 90° ELBOW
FS-90L-3/4	3/4" FORGED STEEL 90° ELBOW
FS-90L-1	1" FORGED STEEL 90° ELBOW
FS-90L-1-1/4	1-1/4" FORGED STEEL 90° ELBOW
FS-90L-2	2" FORGED STEEL 90° ELBOW



PART NO	DESCRIPTION
FORGED STEEL 90° STREET ELBOWS	
FS-90ST-1/4	1/4" FORGED STEEL 90° STREET ELBOW
FS-90ST-3/8	3/8" FORGED STEEL 90° STREET ELBOW
FS-90ST-1/2	1/2" FORGED STEEL 90° STREET ELBOW
FS-90ST-3/4	3/4" FORGED STEEL 90° STREET ELBOW
FS-90ST-1	1" FORGED STEEL 90° STREET ELBOW
FS-90ST-1-1/4	1-1/4" FORGED STEEL 90° STREET ELBOW
FS-90ST-2	2" FORGED STEEL 90° STREET ELBOW



PART NO	DESCRIPTION
FORGED STEEL UNIONS	
FS-U-1/4	1/4" FORGED STEEL UNION
FS-U-3/8	3/8" FORGED STEEL UNION
FS-U-1/2	1/2" FORGED STEEL UNION
FS-U-3/4	3/4" FORGED STEEL UNION
FS-U-1	1" FORGED STEEL UNION

Pipe Accessories



Two Barrel Hardware Clamps

Features:

- Perfect for tight, hard to reach spaces!
- Minimizes parts that protrude by tightening together versus tightening away from.
- Deep socket tools not required.
- 300 Stainless steel construction.



PART NO	DESCRIPTION
TWO BARREL HARDWARE CLAMPS	
BC090	3/4" 300 SS Floating Bridge w/Lockwasher
BC114	1" 300 SS Floating Bridge w/Lockwasher

Pipe Sealant



PART NO	DESCRIPTION
PIPE SEALANT	
RS21	RectorSeal® No. 21™ (8 oz-24/case)
RSTB	RectorSeal® Tru-Blu™ (8 oz-24/case)
RSTB-PINT	RectorSeal® Tru-Blu™ (16 oz)

Banjo Super Clamps

Features:

- Stainless steel construction.
- Stainless steel bolt with silver plated nut to prevent seizing.
- 360° sealing surface.
- Ideal for high torque applications.
- Nylon lock nut feature.
- Strong, positive connections where ordinary hose clamps fail.
- T-bolt design.
- 3 spot welds for extra strength.



PART NO	DESCRIPTION
TWO BARREL HARDWARE CLAMPS	
BC114	1" 300 SS Floating Bridge w/Lockwasher

Teflon Tape

An effective, reliable sealant used on MPT fittings to help prevent leaks. This easy-to-use economical sealant keeps water, gas and air from leaking through threaded connections in plumbing pipes.



How to Order:

- Teflon Tape.....1"
- Teflon Tape.....1/2"

Garden Hose Spray Nozzle

Features:

- Heavy-duty machined aluminum construction stands up to hard use.
- Comfort-grip soft rubber provides a comfortable gripping texture.
- Resists dents, mars and scratches and also protects any surface that comes in contact with nozzle.
- Aluminum hose connection provides a tight fit, will not rust.
- Multiple spray pattern adjusts from a powerful jet stream to a gentle fan spray. Ideal for all your spraying needs.
- Stainless steel spray cap for precise spray patterns.



PART NO	DESCRIPTION
GARDEN HOSE SPRAY NOZZLE	
GHN075	3/4" Garden Hose Spray Nozzle

PIPE FITTINGS

PVC Schedule 80 Pipe & Pipe Fittings



PART NO	PIPE SIZE (IN.)
PVC SCHEDULE 80 PIPE	
PVC-PIPE-3/4	3/4
PVC-PIPE-1	1
PVC-PIPE-1-1/4	1-1/4
PVC-PIPE-1-1/2	1-1/2
PVC-PIPE-2	2
PVC-PIPE-3	3
PVC-PIPE-4	4

Not recommended for compressed air or gases.
*The maximum working pressure: 73°F.

PVC SCH 80

PVC Schedule 80 Pipe Fittings




				1/4"	3/8"	1/2"	3/4"	1"	1-1/4"	1-1/2"	2"	2-1/2"	3"	4"	
PVC SCHEDULE 80 PIPE FITTINGS															
Tee		TEE	801	SXS	-002	-003	-005	-007	-010	-012	-015	-020	-025	-030	-040
		TEE	805	TXT	-002	-003	-005	-007	-010	-012	-015	-020	-025	-030	-040
90° Elbow		90° ELL	806	SXS	-002	-003	-005	-007	-010	-012	-015	-020	-025	-030	-040
		90° ELL	808	TXT	-002	-003	-005	-007	-010	-012	-015	-020	-025	-030	-040
45° Elbow		45° ELL	817	SXS	-002	-003	-005	-007	-010	-012	-015	-020	-025	-030	-040
		45° ELL	819	TXT	-002	-003	-005	-007	-010	-012	-015	-020	-025	-030	-040
Coupling		COUPLINGS	829	SXS	-002	-003	-005	-007	-010	-012	-015	-020	-025	-030	-040
		COUPLINGS	830	TXT	-002	-003	-005	-007	-010	-012	-015	-020	-025	-030	-040
		FEMALE ADAPTER	835	SXT	-002	-003	-005	-007	-010	-012	-015	-020	-025	-030	-040
Cap		MALE ADAPTER	836	SXMT	-002	-003	-005	-007	-010	-012	-015	-020	-025	-030	-040
		CAP	847	S	-002	-003	-005	-007	-010	-012	-015	-020	-025	-030	-040
Plug		CAP	848	T	-002	-003	-005	-007	-010	-012	-015	-020	-025	-030	-040
		PLUG	849	SPG	-002	-003	-005	-007	-010	-012	-015	-020	-025	-030	-040
Union		PLUG	850	MT	-002	-003	-005	-007	-010	-012	-015	-020	-025	-030	-040
		UNION	857	SXS	-002	-003	-005	-007	-010	-012	-015	-020	-025	-030	-040
		UNION	858	TXT	-002	-003	-005	-007	-010	-012	-015	-020	-025	-030	-040

PVC Schedule 80 Pipe & Nipples

PVC Schedule 80 Pipe Fittings



Van Stone Flange

PART NO	SIZE	1/2"	3/4"	1"	1-1/4"	1-1/2"	2"	2-1/2"	3"	4"	
PVC SCHEDULE 80 PIPE FITTINGS											
CROSS 	820	SXS	-005	-007	-010	-012	-015	-020	-025	-030	-040
VAN STONE FLANGE 	855	S	-005	-007	-010	-012	-015	-020	-025	-030	-040
VAN STONE FLANGE 	856	SPG	-005	-007	-010	-012	-015	-020	-025	-030	-040

Not recommended for compressed air or gases.

PVC Schedule 80 Pipe Nipples



Pipe Nipple

PART NO	SIZE
PIPE NIPPLES	
861-037	1/4 x CL
861-039	1/4 x 2
861-041	1/4 x 3
861-042	1/4 x 4
861-043	1/4 x 5
861-044	1/4 x 6
861-045	1/4 x 8
861-046	1/4 x 10
861-047	1/4 x 12
861-055	3/8 x CL
861-057	3/8 x 2
861-058	3/8 x 3
861-059	3/8 x 4
861-061	3/8 x 5
861-062	3/8 x 6
861-077	1/2 x CL
861-079	1/2 x 2
861-081	1/2 x 3
861-082	1/2 x 4
861-083	1/2 x 5
861-084	1/2 x 6
861-104	3/4 x CL
861-106	3/4 x 3
861-107	3/4 x 4
861-108	3/4 x 5
861-109	3/4 x 6
861-133	1 x CL

PART NO	SIZE
PIPE NIPPLES	
861-135	1 x 3
861-136	1 x 4
861-137	1 x 5
861-138	1 x 6
861-170	1-1/4 x CL
861-172	1-1/4 x 3
861-173	1-1/4 x 4
861-174	1-1/4 x 5
861-175	1-1/4 x 6
861-213	1-1/2 x CL
861-215	1-1/2 x 3
861-216	1-1/2 x 4
861-217	1-1/2 x 5
861-218	1-1/2 x 6
861-251	2 x CL
861-252	2 x SH
861-253	2 x 3
861-254	2 x 4
861-255	2 x 5
861-256	2 x 6
861-338	3 x CL
861-341	3 x 4
861-342	3 x 5
861-343	3 x 6
861-422	4 x CL
861-425	4 x 5
861-426	4 x 6

Teflon Tape

An effective, reliable sealant used on MPT fittings to help prevent leaks. This easy-to-use economical sealant keeps water, gas and air from leaking through threaded connections in plumbing pipes.

How to Order:

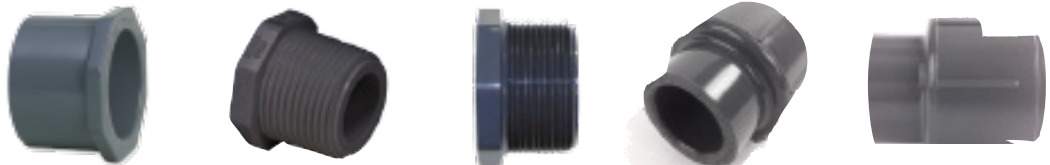
Teflon Tape.....1"
Teflon Tape.....1/2"








Not recommended for compressed air or gases.

PVC Schedule 80 Reducer Bushings & Reducer Couplings

PVC Schedule 80 Reducer Bushings and Reducer Couplings



	Reducer Bushings			Reducer Couplings	
SIZE	 SPG X S NO. 837	 SPG X T NO. 838	 MT X T NO. 839	 S X S NO. 829	 T X T NO. 830
REDUCER FITTINGS					
3/8 x 1/4	-052	-052	-052	-052	-052
1/2 x 1/4	-072	-072	-072	-072	-072
1/2 x 3/8	-073	-073	-073	-073	-073
3/4 x 1/4	-098	-098	-098	-098	-098
3/4 x 3/8	-099	-099	-099	-099	-099
3/4 x 1/2	-101	-101	-101	-101	-101
1 x 1/4	-128	-128	-128	-128	-128
1 x 3/8	-129	-129	-129	-129	-129
1 x 1/2	-130	-130	-130	-130	-130
1 x 3/4	-131	-131	-131	-131	-131
1-1/4 x 1/2	-166	-166	-166	-166	-166
1-1/4 x 3/4	-167	-167	-167	-167	-167
1-1/4 x 1	-168	-168	-168	-168	-168
1-1/2 x 1/2	-209	-209	-209	-209	-209
1-1/2 x 3/4	-210	-210	-210	-210	-210
1-1/2 x 1	-211	-211	-211	-211	-211
1-1/2 x 1-1/4	-212	-212	-212	-212	-212
2 x 3/4	-248	-248	-248	-248	-248
2 x 1	-249	-249	-249	-249	-249
2 x 1-1/4	-250	-250	-250	-250	-250
2 x 1-1/2	-251	-251	-251	-251	-251
3 x 2	-338	-338	-338	-338	-338
4 x 2	-420	-420	-420	-420	-420
4 x 3	-422	-422	-422	-422	-422

Not recommended for compressed air or gases.

PART NO	DESCRIPTION
TANK ADAPTERS / BULKHEAD FITTINGS	
PVC-TA-1/4	PVC SCH 80 Thread x Thread 1/4"
PVC-TA-3/8	PVC SCH 80 Thread x Thread 3/8"
PVC-TA-1/2	PVC SCH 80 Thread x Thread 1/2"
PVC-TA-3/4	PVC SCH 80 Thread x Thread 3/4"
PVC-TA-1	PVC SCH 80 Thread x Thread 1"
PVC-TA-1-1/4	PVC SCH 80 Thread x Thread 1-1/4"
PVC-TA-1-1/2	PVC SCH 80 Thread x Thread 1-1/2"
PVC-TA-2	PVC SCH 80 Thread x Thread 2"

Not recommended for compressed air or gases.

PVC Schedule 80 PVC Tank Adapters Bulkhead Fittings



SDR 11 High Density Polyethylene Pipe & Fittings

SDR11 HDPE Pipe (High Density Polyethylene Pipe)

An outstanding choice for chemical & fertilizer transfer. Lightweight, flexible, chemical and abrasion resistant. This product will not rust, rot, corrode or crack like some other pipe products. Resistant to agriculture chemicals and acids.



- Ideal for Fertilizer & Chemical Transfer
- Economical
- No Rust
- Smooth (High Flow rates)
- Unaffected by Sunlight
- Extremely Tough
- Available in 20 foot lengths

PART NO	PIPE SIZE (IN.)
SDR 11 PIPE	
PE-PIPE-2	2
PE-PIPE-3	3
PE-PIPE-4	4

SDR 11 HDPE Pipe Fittings

Poly pipe and fittings are coupled by a process called Heat Fusion. Heat Fusion is done with a special machine that actually melts the pipe and fittings and bonds them together creating a fused joint stronger than the pipe itself. This design also enables you to easily add new lines or fittings if required in the future. Black w/excellent UV resistance - very long life expectancy outdoors. Not for flammable liquids or petroleum base products.



DESCRIPTION		2"	3"	4"	
SDR 11 HDPE PIPE FITTINGS					
TEE		PE-T	-2	-3	-4
45° ELL		PE-45L	-2	-3	-4
90° ELL		PE-90L	-2	-3	-4
REDUCER		PE-R	-2	-3	-4
TRANSITIONAL FITTING - SS		PE-TF	-2-SS	-3-SS	-4-SS
TRANSITIONAL FITTING - BI		PE-TF	-2-BI	-3-BI	-4-BI
FLANGE ADAPTER		PE-FL-ADPT	-2	-3	-4
CAP		PE-CA	-2	-3	-4
BACK UP RING		PE-BUR	-2-PP	-3-PP	-4-PP